

# Elements of Urban Integration Strategies

*Coping with immigration, building socially cohesive communities in turbulent times*

Matthias Schulze-Böing

Integration Strategy Group (GMFUS, GIZ)

Workshop Istanbul 2-3 June 2016

Stadt  
Offenbach  
am Main

OF



Frankfurt

Offenbach

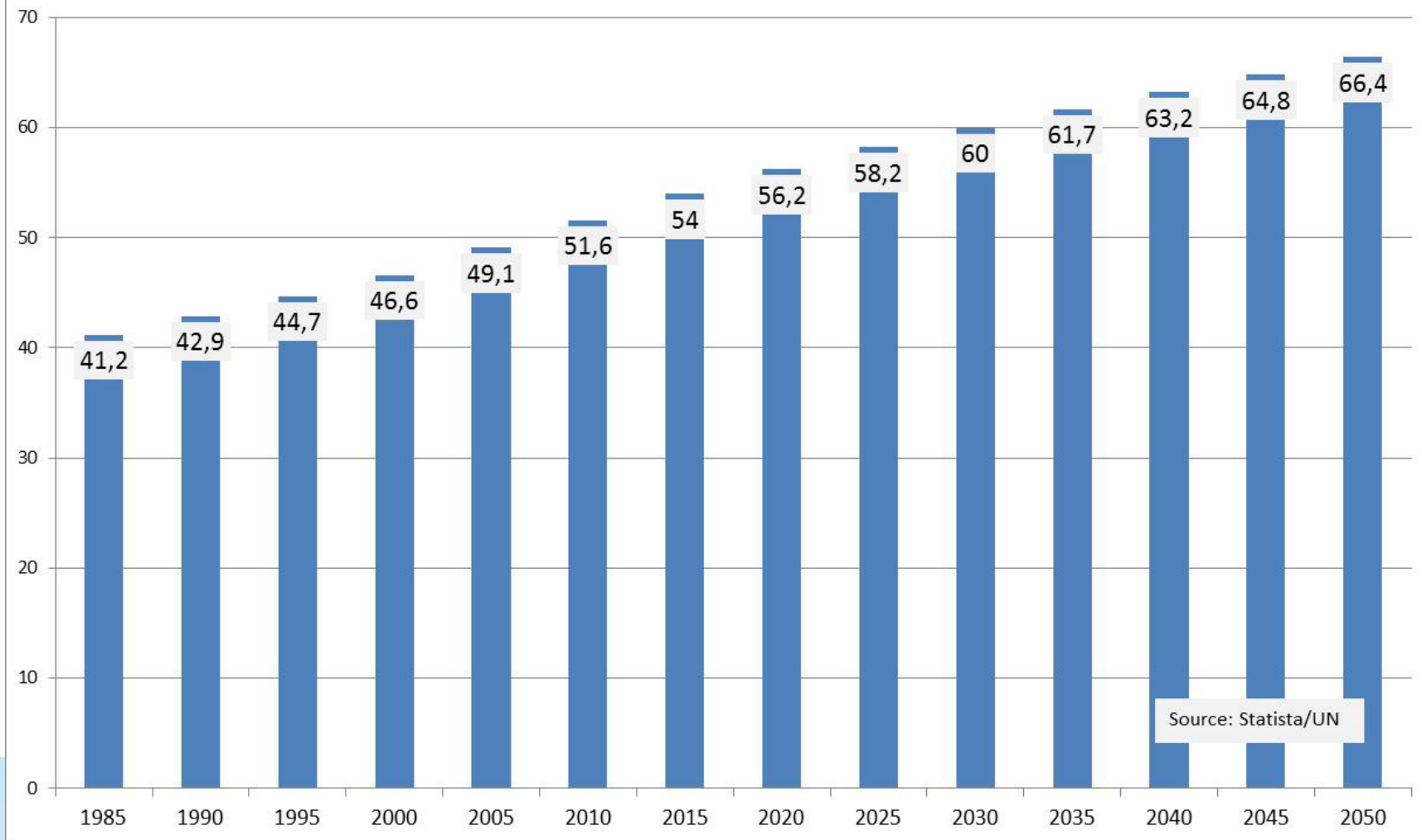
### Population

- The Frankfurt Metropolitan Area: 5 Mio
- The City of Frankfurt: 750.000
- The City of Offenbach: 130.000





## Percentage of Population living in Cities

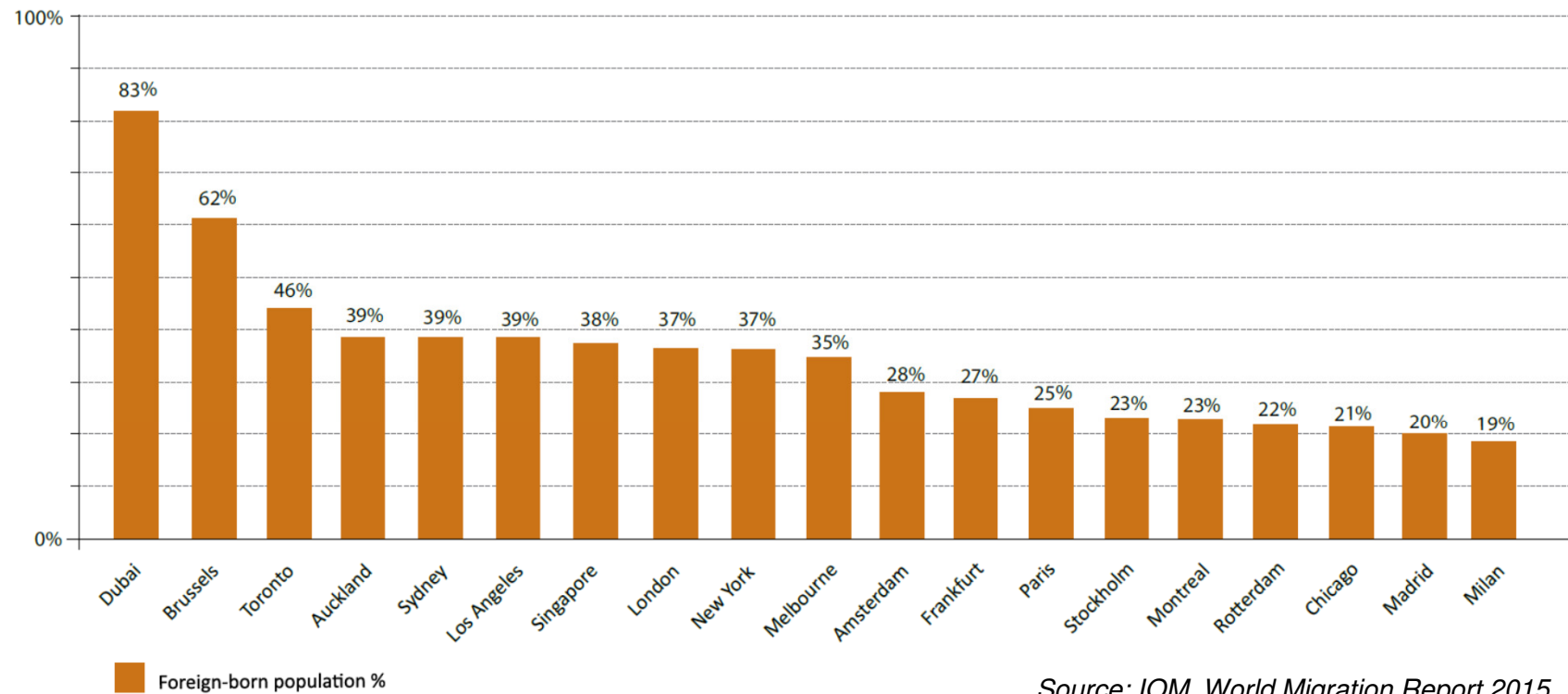


# Cities are

- the (potentially) most sustainable form of culture and civilization (Edward Glaeser, The Triumph of the City)
- drivers of change and social innovation
- places of diversity, conflict, alienation, collective learning
- laboratories for ways of life, forms of societal solidarity, living in diversity
- hubs for mobility and integration („integration machines“)
- main destination of immigration flows



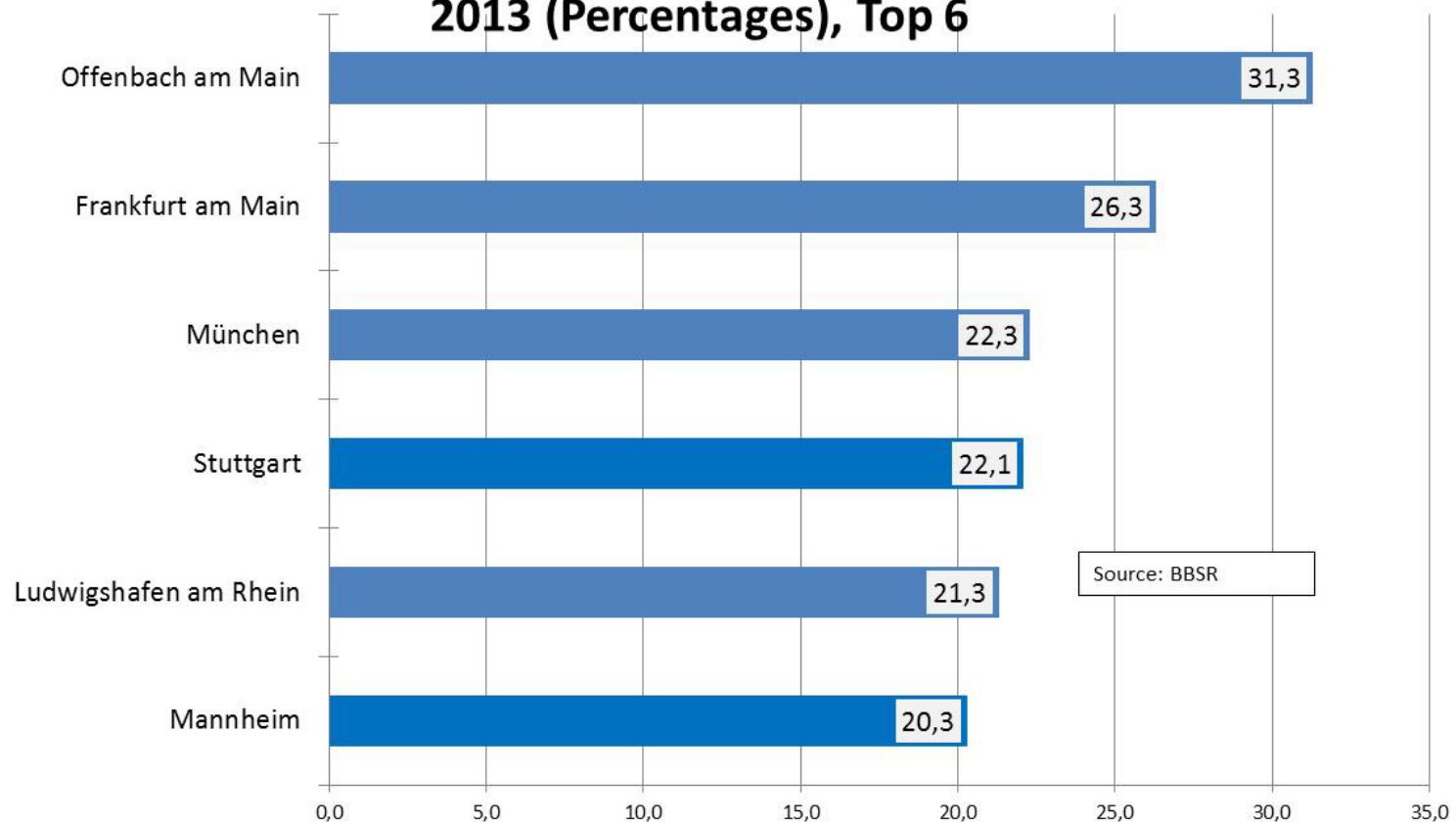
Figure 1 Foreign-born population in major cities



Source: IOM, World Migration Report 2015



## German Cities - Proportion of Non-German Population 2013 (Percentages), Top 6



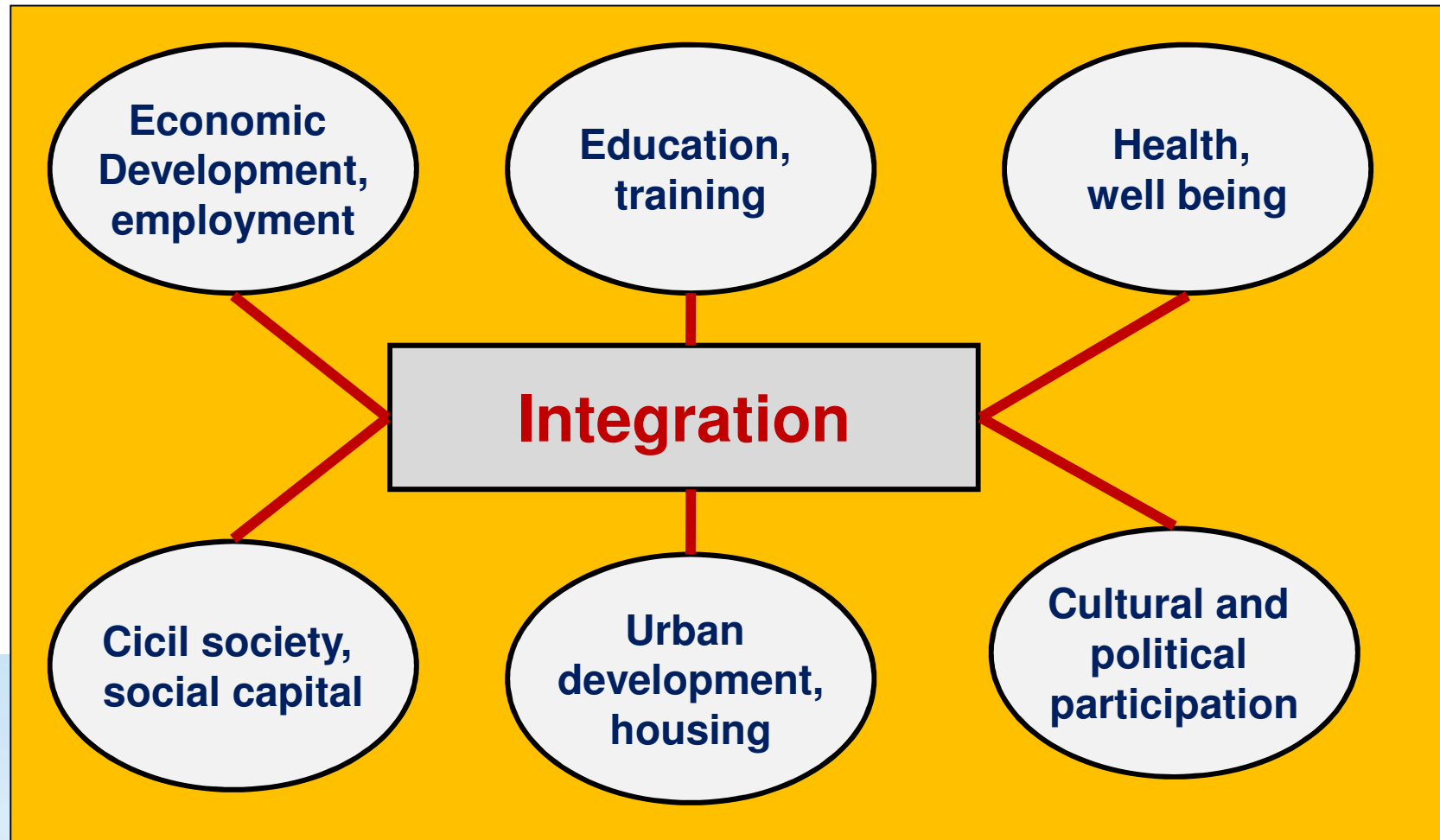


# Immigration and Cities – Opportunities and Challenges

- Economic growth
- Diversity
- Potential for Innovation
- Fix of demographic imbalances
- Increase of connectivity
- Wealth generating links between places of departure and arrival cities (Doug Saunders)

- Weakening social and cultural cohesion
- Pressure on housing and labour markets
- Raising unemployment and poverty rates
- Pressure on social budgets
- Social investment for education and integration
- Residential segregation

# Urban Integration Strategy (UIS) – a horizontal policy issue





# UIS Offenbach - Strategic Policy Areas

## Policies and fields of action

### Education

- Strategic planning
- Counselling
- Early intervention (language training at child age)
- Social work at schools
- Outreach

### Urban Development

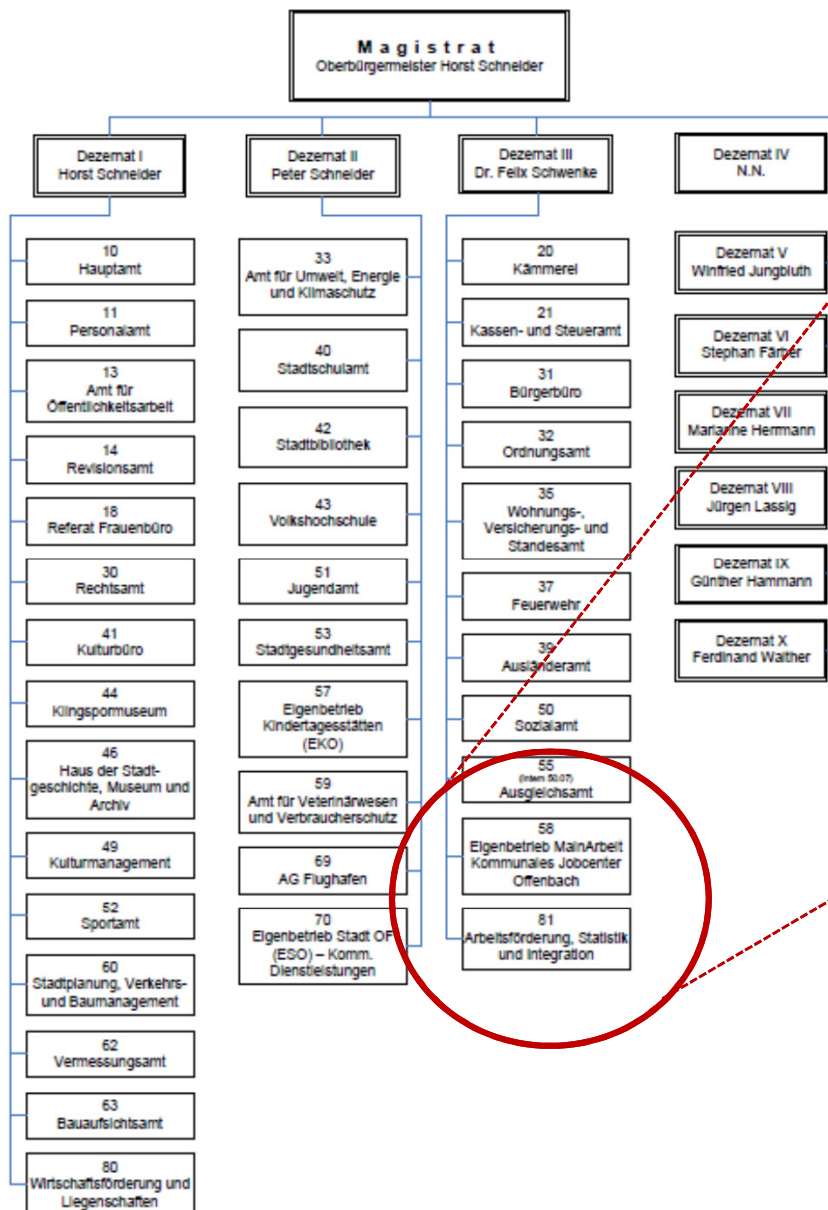
- Limiting segregation
- Re-balancing social structure
- Shaping urban density
- Encouraging and supporting immigrant careers and social mobility

### Social Cohesion

- Neighbourhood management
- Making migrant communities part of civil society
- New formats of communication
- Keep an eye on peace and order

### Employment

- Local jobcenter
- Supporting entrepreneurship
- Skills strategy
- Management of school-to-work-transitions



Jobcenter, delivering social assistance, educational services to jobseekers, and employment services - 270 staff

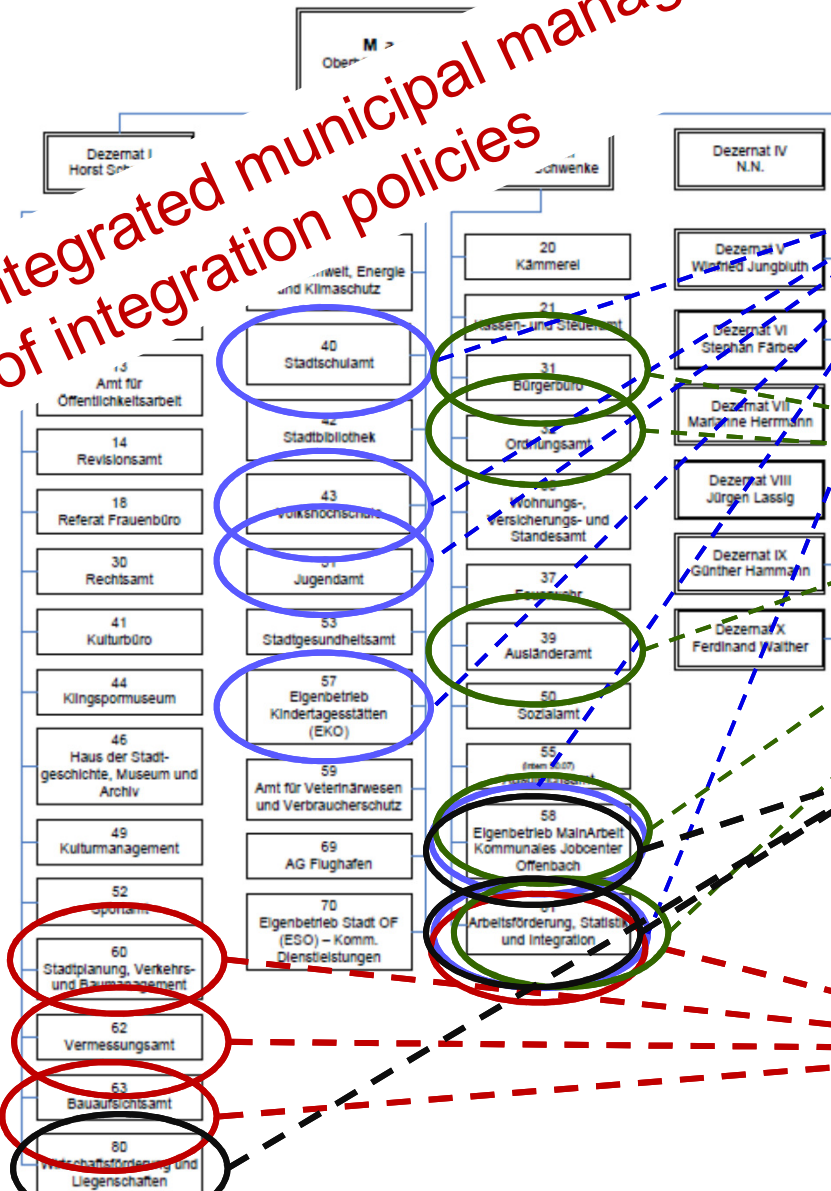
58  
Eigenbetrieb MainArbeit  
Kommunales Jobcenter  
Offenbach

81  
Arbeitsförderung, Statistik  
und Integration

Deptm. for Employment, Statistics (Urban Research), Integration Policies (including the responsibilities for social planning, neighborhood development, and the European Liaison Office)

30 staff

Integrated municipal management  
of integration policies



Departments  
working for the  
alliance for skills  
and education

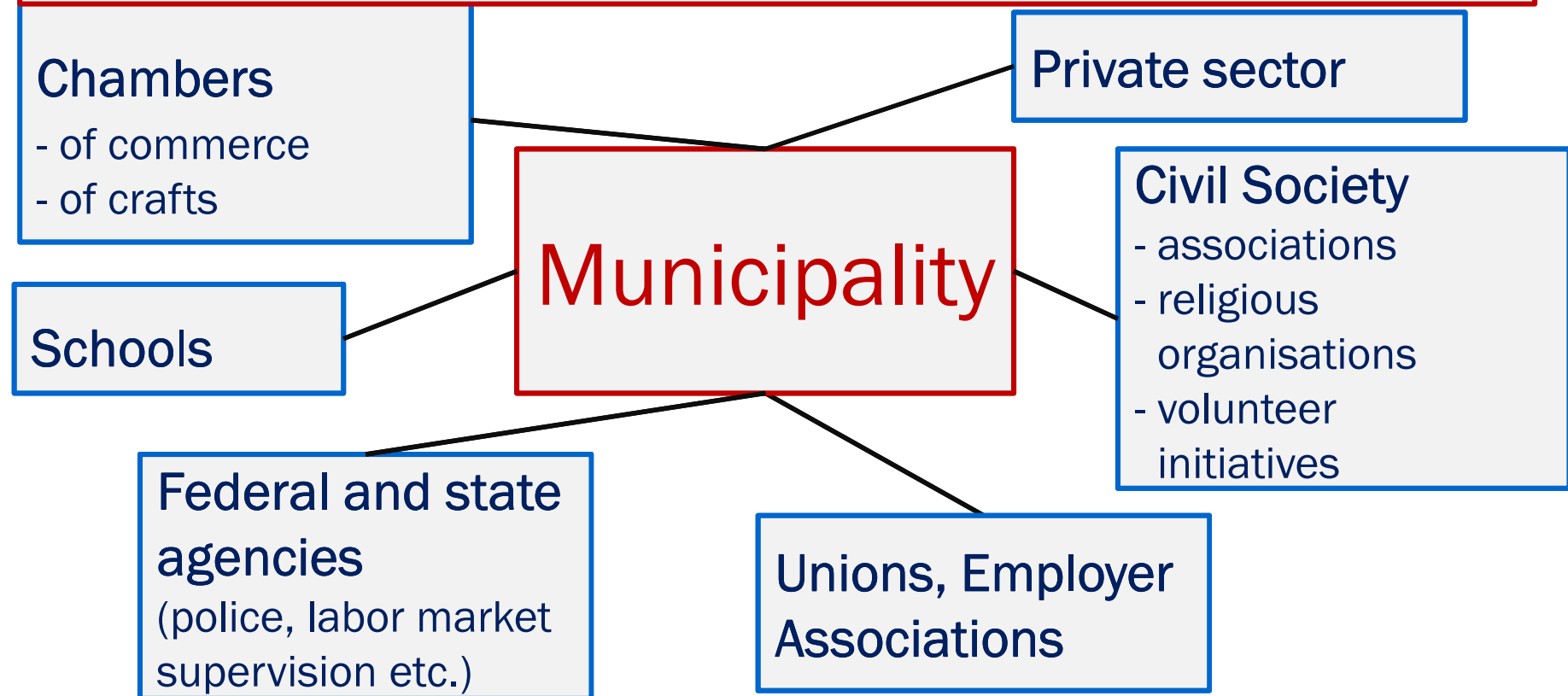
Departments  
implementing the  
social cohesion  
pillar of the UIS

Departments  
implementing the  
local employment  
strategy

Departments  
implementing the  
inclusive urban  
development  
strategy



# Urban Integration Strategy – working together on the local level



# Principles of good practice

- Holistic policies
- Systemic management, coordination of policy areas
- Build and manage networks and „bridging social capital“ (Robert Putnam)
- Encourage and support social co-production
- Strengthen municipal capacities and social innovation:
  - Think „Out-of-the-Box“ (at least sometimes)
  - Break policy silos (although this may prove demanding)
  - Mobilise partnerships of diverse actors
  - Develop staff capacities (e. g. intercultural competencies)

Stadt Offenbach am Main

[www.offenbach.de](http://www.offenbach.de)

[www.oflovesu.com](http://www.oflovesu.com)

MainArbeit. Kommunales Jobcenter Offenbach

[www.mainarbeit-offenbach.de](http://www.mainarbeit-offenbach.de)

Dr. Matthias Schulze-Böing, T. 0049-69-8065-8200

[schulze-boeing@offenbach.de](mailto:schulze-boeing@offenbach.de)

